

Dog Run

1: Lay out all parts to be sure everything is included before assembly.



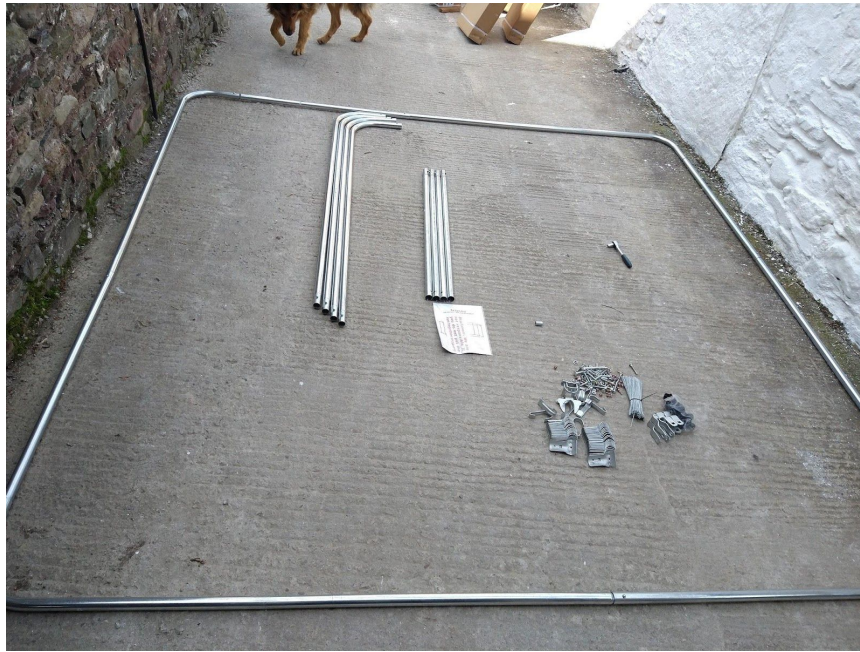


2: Assemble gate frame. Stretch out small chain link wire making sure it's all the same height, then insert tension rods as in pictures. Attach to frame using the clips provided as shown.





3: Assemble the bottom frame as shown, bars just clip together. Bar numbers 1 and 2



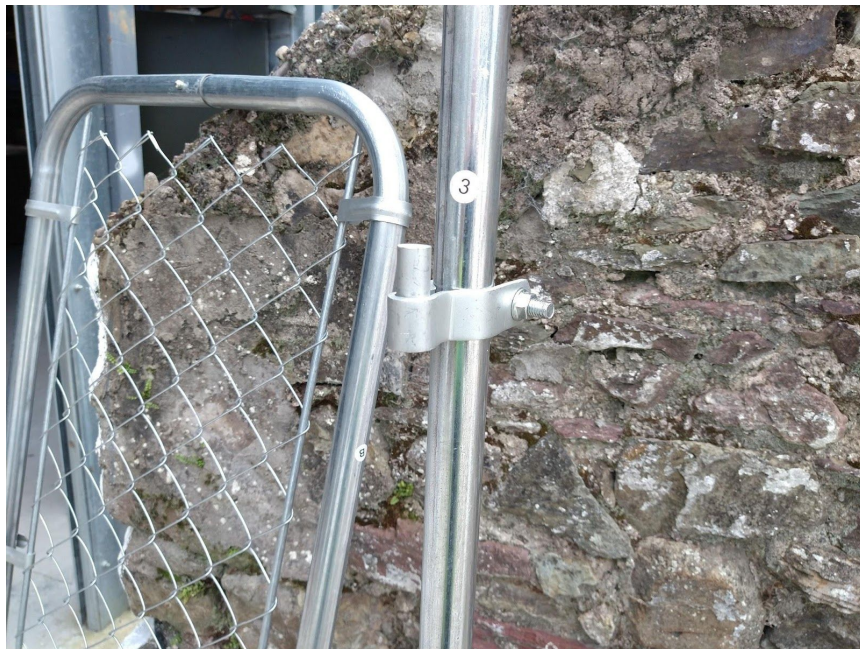
4: Attach uprights using clamps, bolts and nuts provided. Uprights are bar number 3



5: Work your way around the top, attaching the top frame to uprights.



6: Secure hinges to frame and gate, followed by latch. Sit the gate into hinges.





7: Roll out chain link wire on flat surface. Check to see is the wire at the same height all the way along the length, make adjustments if needed. Roll the wire back up once everything is in order.





8: This is a two person job. There's a great video on our website that shows exactly how to unroll the chain link around the frame.

Insert tension rod to one end of the rolled up wire and clip it to the dog run frame by the door. Begin rolling it out around the entire frame keeping it tight and even as you proceed. When you make your way all the way around you'll likely have some extra wire left over. Insert the last tension rod and attach it with clips to the upright next to the door.



9: Using the wire provided, start securing the wire to the frame. Around the bottom you should tie every 3 chain links and every 4 or 5 at the top and on the uprights.





10: Assemble roof bars and tie down roof cover.





Dog run is then assembled and ready to use.